

Revit®

Architecture 2008

Migrating to Revit Architecture Autodesk Official Training Courseware (AOTC)

© Copyright 2007 Autodesk, Inc.

All rights reserved. Except as otherwise permitted by Autodesk, Inc., this publication, or parts thereof, may not be reproduced in any form, by any method, for any purpose.

Certain materials included in this publication are reprinted with the permission of the copyright holder.

Trademarks

The following are registered trademarks or trademarks of Autodesk, Inc., in the USA and other countries: 3DEC (design/logo), 3December, 3December.com, 3ds Max, ActiveShapes, Actrix, ADI, Alias, Alias (swirl design/logo), AliasStudio, Alias|Wavefront (design/logo), ATC, AUGI, AutoCAD, AutoCAD Learning Assistance, AutoCAD LT, AutoCAD Simulator, AutoCAD SQL Extension, AutoCAD SQL Interface, Autodesk, Autodesk Envision, Autodesk Insight, Autodesk Intent, Autodesk Inventor, Autodesk Map, Autodesk MapGuide, Autodesk Streamline, AutoLISP, AutoSnap, AutoSketch, AutoTrack, Backdraft, Built with ObjectARX (logo), Burn, Buzzsaw, CAiCE, Can You Imagine, Character Studio, Cinestream, Civil 3D, Cleaner, Cleaner Central, ClearScale, Colour Warper, Combustion, Communication Specification, Constructware, Content Explorer, Create>what's>Next> (design/logo), Dancing Baby (image), DesignCenter, Design Doctor, Designer's Toolkit, DesignKids, DesignProf, DesignServer, DesignStudio, Design|Studio (design/logo), Design Your World, Design Your World (design/logo), DWF, DWG, DWG (logo), DWG TrueConvert, DWG TrueView, DXF, EditDV, Education by Design, Extending the Design Team, FBX, Filmbox, FMDesktop, Freewheel, GDX Driver, Gmax, Heads-up Design, Heidi, HOOPS, HumanIK, i-drop, iMOUT, Incinerator, IntroDV, Inventor, Inventor LT, Kaydara, Kaydara (design/logo), LocationLogic, Lustre, Maya, Mechanical Desktop, MotionBuilder, ObjectARX, ObjectDBX, Open Reality, PolarSnap, PortfolioWall, Powered with Autodesk Technology, Productstream, ProjectPoint, Reactor, RealDWG, Real-time Roto, Render Queue, Revit, Showcase, SketchBook, StudioTools, Topobase, Toxik, Visual, Visual Bridge, Visual Construction, Visual Drainage, Visual Hydro, Visual Landscape, Visual Roads, Visual Survey, Visual Syllabus, Visual Toolbox, Visual Tugboat, Visual LISP, Voice Reality, Volo, and Wiretap.

The following are registered trademarks or trademarks of Autodesk Canada Co. in the USA and/or Canada and other countries: Backburner, Discreet, Fire, Flame, Flint, Frost, Inferno, Multi-Master Editing, River, Smoke, Sparks, Stone, Wire.

Microsoft and Windows are registered trademarks of Microsoft Corporation in the United States and/or other countries.

ACIS Copyright © 1989–2001 Spatial Corp. Portions Copyright © 2002 Autodesk, Inc.

Copyright © 1997 Microsoft Corporation. All rights reserved.

Flash® is a registered trademark of Macromedia, Inc. in the United States and/or other countries.

International CorrectSpell™ Spelling Correction System © 1995 by Lernout & Hauspie Speech Products, N.V. All rights reserved.

InstallShield™ 3.0. Copyright © 1997 InstallShield Software Corporation. All rights reserved.

PANTONE® Colors displayed in the software application or in the user documentation may not match PANTONE-identified standards. Consult current PANTONE Color Publications for accurate color.

PANTONE® and other Pantone, Inc. trademarks are the property of Pantone, Inc. © Pantone, Inc., 2002.

Pantone, Inc. is the copyright owner of color data and/or software which are licensed to Autodesk, Inc., to distribute for use only in combination with certain Autodesk software products. PANTONE Color Data and/or Software shall not be copied onto another disk or into memory unless as part of the execution of this Autodesk software product.

Portions Copyright © 1991–1996 Arthur D. Applegate. All rights reserved.

Portions of this software are based on the work of the Independent JPEG Group.

RAL DESIGN © RAL, Sankt Augustin, 2002.

RAL CLASSIC © RAL, Sankt Augustin, 2002.

Representation of the RAL Colors is done with the approval of RAL Deutsches Institut für Gütesicherung und Kennzeichnung e.V. (RAL German Institute for Quality Assurance and Certification, re. Assoc.), D-53757 Sankt Augustin.

Typefaces from the Bitstream® typeface library Copyright 1992.

Typefaces from Payne Loving Trust © 1996. All rights reserved.

AutoCAD 2008 is produced under a license of data derived from DIC Color Guide® from Dainippon Ink and Chemicals, Inc. Copyright © Dainippon Ink and Chemicals, Inc. All rights reserved. DIC Color Guide computer color simulations used in this product may not exactly match DIC Color Guide, DIC Color Guide Part 2 identified solid color standards. Use current DIC Color Guide Manuals for exact color reference. DIC and DIC Color Guide are registered trademarks of Dainippon Ink and Chemicals, Inc.

Printed manual and help produced with Idiom WorldServer™.

WindowBlinds: DirectSkin™ OCX © Stardock®.

AnswerWorks 4.0 ©; 1997–2003 WexTech Systems, Inc. Portions of this software © Vantage-Knexys. All rights reserved.

The Director General of the Geographic Survey Institute has issued the approval for the coordinates exchange numbered TKY2JGD for Japan Geodetic Datum 2000, also known as technical information No H1-N0.2 of the Geographic Survey Institute, to be installed and used within this software product (Approval No.: 646 issued by GSI, April 8, 2002).

Portions of this computer program are Copyright © 1995–1999 LizardTech, Inc. All rights reserved. MrSID is protected by U.S. Patent No. 5,710,835. Foreign Patents Pending.

Portions of this computer program are Copyright ©; 2000 Earth Resource Mapping, Inc.

OSTN97 © Crown Copyright 1997. All rights reserved.

OSTN02 © Crown Copyright 2002. All rights reserved.

OSGM02 © Crown Copyright 2002, © Ordnance Survey Ireland, 2002.

FME Objects Engine © 2005 SAFE Software. All rights reserved.

All other brand names, product names, or trademarks belong to their respective holders.

Disclaimer

THIS PUBLICATION AND THE INFORMATION CONTAINED HEREIN IS MADE AVAILABLE BY AUTODESK, INC. "AS IS." AUTODESK, INC. DISCLAIMS ALL WARRANTIES, EITHER EXPRESS OR IMPLIED, INCLUDING BUT NOT LIMITED TO ANY IMPLIED WARRANTIES OF MERCHANTABILITY OR FITNESS FOR A PARTICULAR PURPOSE REGARDING THESE MATERIALS.

Published by:
Autodesk, Inc.
111 McInnis Parkway
San Rafael, CA 94903, USA

Contents

- Introduction..... ix**

- Chapter 1: Starting a Revit Architecture Project..... 1**
 - Lesson: Setting Up Projects with AutoCAD Data 2
 - Overview..... 2
 - About Revit Architecture Projects 3
 - AutoCAD Data in Revit Architecture 6
 - Process of Creating a Project with AutoCAD Data 7
 - Guidelines for Creating a Revit Architecture Project with AutoCAD Data 8
 - Exercise: Create a Revit Project from AutoCAD Data 9
 - Lesson: Migrating Project Standards 12
 - Overview..... 12
 - About Project Standards..... 13
 - Styles and Display Settings..... 14
 - Creating Project Standards..... 18
 - Creating Project Templates 21
 - Applying View Templates..... 22
 - Guidelines for Working with Templates..... 23
 - Exporting Standardized Projects 24
 - Exercise: Migrate Project Standards..... 26
 - Lesson: Creating and Managing Drawing Sheets..... 32
 - Overview..... 32
 - About Drawing Sheets..... 33
 - About Titleblocks..... 34
 - Managing Drawing Sheets 35
 - Guidelines for Creating and Managing Sheets 37
 - Exercise: Create Drawing Sheets Using AutoCAD Data..... 38
 - Chapter Summary..... 43

- Chapter 2: Leveraging AutoCAD Data 45**
 - Lesson: Importing and Linking AutoCAD Data 46
 - Overview..... 46
 - About Imported and Linked AutoCAD Vector Data Behavior 47
 - Import Settings..... 49
 - Positioning Options 51
 - Guidelines for Importing and Linking AutoCAD Vector Data..... 52
 - Exercise: Import and Link AutoCAD Vector Data 53

Lesson: Using Imported AutoCAD Vector Data	61
Overview	61
About Tracing	62
Guidelines for Tracing and for Using Pick Lines and Draw Options	63
About Partial and Full Explode	66
Exercise: Trace Over the Imported AutoCAD Vector Data	68
Lesson: Adding Details Using Imported CAD Vector Data	73
Overview	73
About Drafting Views	74
About Detail Views	75
About Detail Tools	77
About Reference Callouts	78
About Fill Patterns	79
Guidelines for Adding Details Using Imported CAD Vector Data	82
Exercise: Add Details by Using CAD Vector Data	84
Lesson: Importing, Exporting, and Managing AutoCAD Objects	87
Overview	87
AutoCAD Objects in Revit Architecture	88
Importing AutoCAD Objects	90
Editing AutoCAD Objects and Layers	91
Guidelines for Exchanging Data with AutoCAD Objects	92
Exercise: Import and Export AutoCAD Objects	95
Lesson: Exporting Views to AutoCAD	97
Overview	97
About Revit Architecture Views	98
Export Options	100
Guidelines for Exporting Revit Architecture Views	101
Exercise: Export Revit Architecture Views to AutoCAD	102
Chapter Summary	108

Chapter 3: Completing the Move to Revit Architecture 109

Lesson: Creating and Loading Families	110
Overview	110
About Revit Architecture Families	111
Creating In-Place Families Using AutoCAD Geometry	112
Guidelines for Creating and Loading Families	113
Exercise: Create and Load a Family	114
Lesson: Collaborating with Other Professionals	116
Overview	116
About Collaboration	117
About the IFC Standard	119
About Toposurfaces	120
Creating Toposurfaces	122
Guidelines for Collaborating with Other Professionals	123
Exercise: Collaborate with Multiple Users on Multiple Platforms	125

Lesson: Completing the Migration	129
Overview	129
About Detail Libraries.....	130
Process of Creating Revit Architecture Details from AutoCAD Drawings	131
Process of Saving Drafting Views with Imported AutoCAD Drawings	131
Process of Creating Reusable Details Using Grouped AutoCAD Geometry	132
Guidelines for Completing the Migration	133
Exercise: Create and Use Libraries.....	134
Chapter Summary.....	136

Appendix A: Additional Support and Resources 137

Courseware from Autodesk	138
Autodesk Services & Support.....	140
Autodesk Subscription.....	140
Autodesk Consulting	140
Autodesk Partners	141
Autodesk Authorized Training Centers	141
Autodesk Certification	142
Useful Links	142

Introduction

Welcome to the *Revit Architecture 2008: Migrating to Revit Architecture* Autodesk Official Training Courseware (AOTC), training courseware for use in Authorized Training Center (ATC®) locations, corporate training settings, and other classroom settings.

This courseware is designed to teach you how to make the transition from AutoCAD® to Revit®. While the course is designed using Revit® Architecture content, the concepts and principles can be applied to Revit® Structure and/or Revit® MEP. Although this courseware is designed to be used as a teaching tool for instructor-led courses, it can also be used for self-paced learning. In addition to the courseware, this book encourages self-learning through the use of the Revit Architecture Help system.

This introduction covers the following topics:

- Course objectives
- Prerequisites
- Using this courseware
- CD contents
- Completing the exercises
- Installing the exercise data files from the CD
- Imperial and metric datasets
- Notes, tips, and warnings
- Feedback

This courseware is complementary to the software documentation. For detailed explanations of features and functionality, refer to the Help in the software.

Course Objectives

After completing this course, you will be able to:

- Use AutoCAD data to set up a Revit Architecture project, maintain AutoCAD project standards when you migrate drawings from AutoCAD to Revit Architecture, and create and manage drawing sheets.
- Import and link AutoCAD vector data to a Revit Architecture project, use imported AutoCAD vector data by tracing over it to create a Revit Architecture building model, add details to your building model by using imported CAD vector data, import, edit, and export AutoCAD objects, and export Revit Architecture views to AutoCAD.
- Create and load Revit Architecture families using AutoCAD geometry, collaborate with other professionals in a multiplatform environment, and complete the migration from AutoCAD to Revit Architecture by creating detail libraries of families from AutoCAD drawings.

Prerequisites

This course is designed for AutoCAD users who are interested in making the transition to the Revit family of products.

It is recommended that you have a working knowledge of:

- AutoCAD.
- Revit Architecture, Revit Structure, or Revit MEP.
- Microsoft® Windows® 2000 or Microsoft® Windows® XP.

Using This Courseware

The lessons are independent of each other. However, we recommend that you complete these lessons in the order that they are presented unless you are familiar with the concepts and functionality described in those lessons.

Each chapter contains:

- **Lessons**
Usually two or more lessons in each chapter.
- **Exercises**
Practical, real-world examples for you to practice using the functionality you have just learned. Each exercise contains step-by-step procedures and graphics to help you complete the exercise successfully.

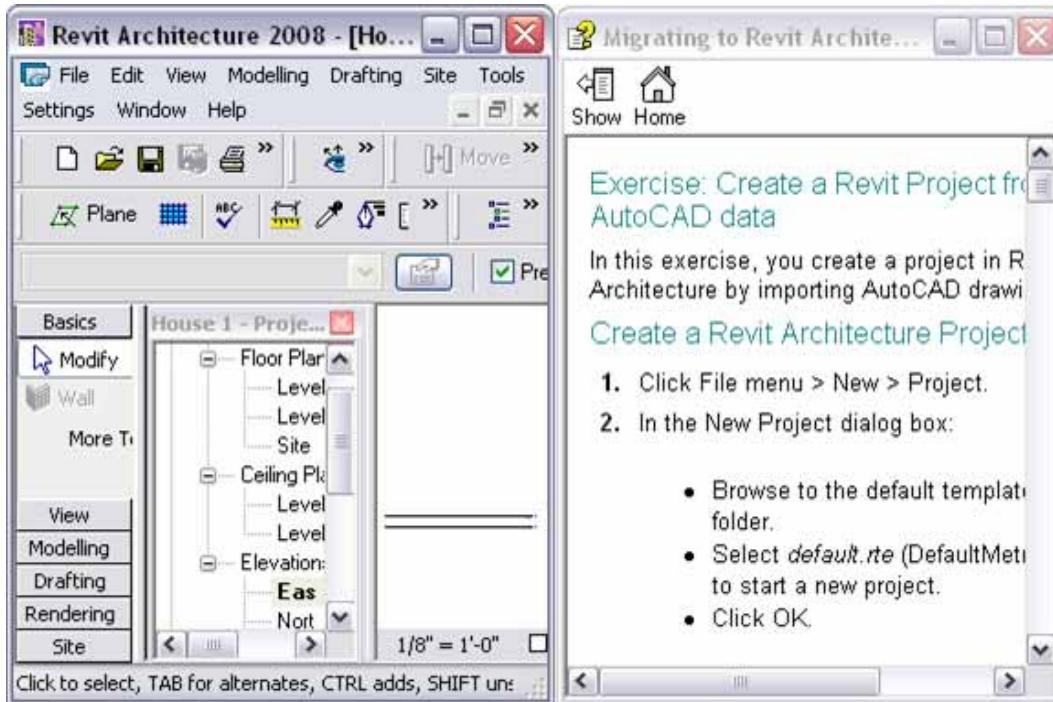
CD Contents

The CD attached to the back cover of this book contains all the data files you need to complete the exercises in this course.

Completing the Exercises

You can complete the exercise in two ways: using the book or onscreen.

- **Using the book**
Follow the step-by-step exercises in the book.
- **Onscreen**
Click the AOTC - Revit Architecture 2008: Migrating to Revit icon on your desktop, installed from the CD, and follow the step-by-step exercises on screen. The onscreen exercises are the same as those in the book. The onscreen version has the advantage that you can concentrate on the screen without having to glance down at your book.



After launching the onscreen exercises, you might need to alter the size of your application window to align both windows.

Installing the Exercise Data Files from the CD

To install the data files for the exercises:

1. Insert the courseware CD.
2. When the setup wizard begins, follow the instructions on screen to install the data.
3. If the wizard does not start automatically, browse to the root directory of the CD and double-click *Setup.exe*.

Unless you specify a different folder, the exercise files are installed in the following folder:

C:\Documents and Settings\All Users\Autodesk Learning\Revit Architecture 2008\Migration

After you install the data from the CD, this folder contains all the files necessary to complete each exercise in this course.

Imperial and Metric Datasets

In exercises that specify units of measurement, alternative files are provided as shown in the following example:

- Open *i_import.rvt* (imperial) or *m_import.rvt* (metric).

In the exercise steps, the imperial value is followed by the metric value in parentheses as shown in the following example:

- For Length, enter **13'2" (4038 mm)**.

For exercises with no specific units of measurement, files are provided as shown in the following example:

- Open *c_8th Floor.rvt*.

In the exercise steps, the unitless value is specified as shown in the following example:

- For Length, enter **400**.

Notes, Tips, and Warnings

Throughout this courseware, notes, tips, and warnings are called out for special attention.



Notes contain guidelines, constraints, and other explanatory information.



Tips provide information to enhance your productivity.



Warnings provide information about actions that might result in the loss of data, system failures, or other serious consequences.

Feedback

We always welcome feedback on Autodesk Official Training Courseware. After completing this course, if you have suggestions for improvements or if you want to report an error in the book or on the CD, please send your comments to AOTC.feedback@autodesk.com.